



Globally Proven
Construction Solutions



STURGIS
ROCK SOLID SOLUTIONS
www.sturgismaterials.com

550 South Packard - Kansas City, KS
913-371-7757

Thin Veneer Installation

This guide provides the basic overview of materials and installation guidelines for Sturgis Materials' Thin Veneer projects. These guidelines do not encompass all project conditions, nor do they replace general installation knowledge. For more assistance on designing with thin veneers, please speak with one of our associates or visit www.sturgismaterials.com.

For more information on LATICRETE® installation materials visit www.laticrete.com/mvis.

Trimming and Prep

Perhaps the most efficient method for trimming thin veneer is through the use of a 4" angle grinder equipped with a diamond blade (figure A). Cuts made at an angle from the back (sawn) side at 1/2" depth allow the stone to be "snapped" with a small hammer along the cut line leaving a natural edge on the front side. Ensure units are clean of laitance, that could impede bond.

Substrate Prep

For moisture and air infiltration protection, coat the substrate with LATICRETE® Air & Water Barrier. First, verify that the substrate is properly prepared and fully cured. Apply 1 coat at 15 – 22 mils thick wet and allow to fully cure (Figure B). Apply a second coat. The LATICRETE Air & Water Barrier will go from a light sage green to a darker olive green when fully cured. Seal all penetrations thoroughly with LATICRETE Air & Water Barrier, including mechanical anchors, brick ties, furring strips, and finish cladding supports.

Setting

Use a trowel to apply a thin coat of LATICRETE Masonry Veneer Mortar to cover entire back of the veneer units (figure C). Spread additional mortar onto the back of the skim coated veneer sufficient to completely fill the space between the veneer and the substrate when compressed against the substrate. Press the mortar covered back of the veneer against the substrate at the desired final position. Slide the unit roughly 1" (25 mm) diagonally while maintaining even pressure (figure D). Take care to keep the joints between the stones consistent and to stagger the vertical joints. Remove excess mortar from the joints prior to setting the next piece (figure E). Periodically pull a piece of stone off the wall to ensure 100% coverage of the mortar between the stone and the substrate (figure F).

Pointing Mortar

After all of the stones have been set, LATICRETE Masonry Pointing Mortar can be applied to the joints via a grout bag or pointing trowel. Work your way through the field from bottom to top, forcing the mortar into the joints or any voids that may exist. Note that joint treatments vary by region and individual preference. If any mortar lands on the face(s) of the stone during the course of installation, allow it to dry slightly and then brush or sponge off any residue. When the mortar becomes firm to thumbprint hardness (30 – 60 minutes depending on climate and temperature), trowel, rake, and/or brush to the desired finish. Finish with a brush or whisk broom.

DO NOT USE ACIDS OR SOLVENTS.

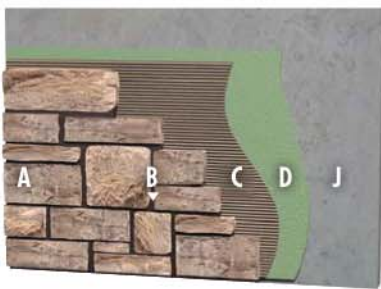


Snap for more information.

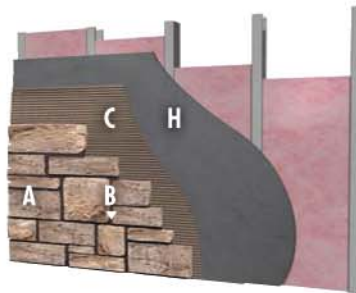
www.laticrete.com/mvis

The LATICRETE Advantage

Sturgis Materials, Inc. recommends the use of the LATICRETE® MVIS™ for all natural thin veneer (NTV) stone. Backed by either the LATICRETE 15 Year System Warranty or 25 Year System Warranty – SPD*, the LATICRETE Masonry Veneer Installation System (MVIS™) delivers a faster, more accurate platform for our natural thin stone veneer lines and ensures an uncompromised standard of quality.



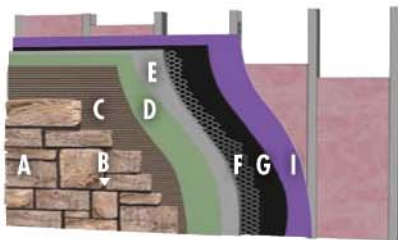
Exterior wall
Concrete wall — Direct adhered with fluid applied air and water barrier



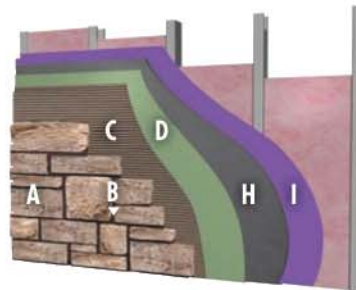
Interior wall
Framed wall with cement backer board substrate



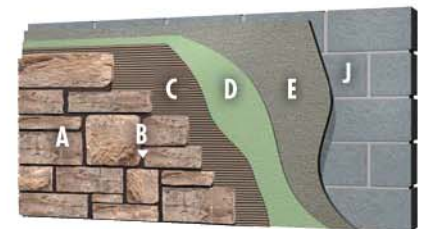
Exterior wall
Concrete wall — lath with scratch and brown coat



Exterior wall
Framed wall with exterior rated sheathing — lath with scratch and brown coat



Exterior wall
Framed wall with exterior rated sheathing — cement backer board substrate



Exterior wall
Concrete Masonry Unit (CMU) wall with skim coat — Direct adhered with fluid applied air and water barrier

Legend

A. Natural Thin Veneer (NTV)

B. LATICRETE® Masonry Pointing Mortar

C. LATICRETE Masonry Veneer Mortar

D. LATICRETE Air & Water Barrier

E. LATICRETE Premium Mortar Bed

F. Metal Lath, 3.4# galvanized diamond wire lath

G. Cleavage membrane type and location per design professional (e.g. #30 builders felt or 4 mil polyethylene sheeting)

H. Cement backer board

I. Exterior rated sheathing

J. Concrete or masonry



* See Data Sheet 230.15SPD and 025.0SPD for complete warranty information.

Square foot quantities reflect raw material coverage only, exclusive of any manipulation of the stone itself. Final results will vary depending on joint width and installation technique.